

ECHO Discovery

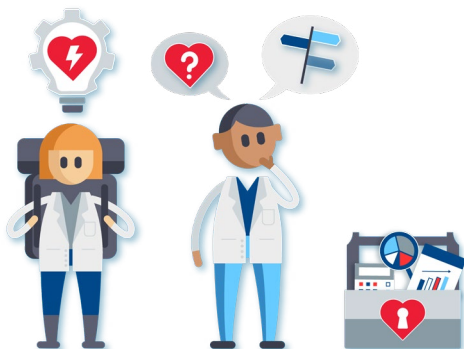
Set your course for entrepreneurship with ECHO Discovery

A foundational education program designed to explore ideation,
research translation and commercialization



Are you interested in cardiovascular health ideation and research translation?

Are you considering entrepreneurship, but aren't sure how to get started?



WHAT IS ECHO DISCOVERY?

ECHO Discovery is an entrepreneurship education program that aims to:

- Provide students, trainees and investigators with an introduction to ideation, entrepreneurship and research translation through theoretical and experiential training
- Support a culture of research translation while igniting startup formation within the cardiovascular space
- Inspire and facilitate new cardiovascular ventures to enroll in the **ECHO program**, a specialized experiential training program providing entrepreneurship training, mentoring, networking, and funding opportunities to innovators within the cardiovascular space

WHAT WILL YOU GAIN?

Participants of the ECHO Discovery program will:

- Gain fundamental entrepreneurship skills and research translation expertise
- Learn from a diverse and multi-sector group of mentors and key opinion leaders
- Join an elite network of early-career entrepreneurs and researchers
- Explore career opportunities within the cardiovascular space and beyond

ECHO Discovery is comprised of three foundational elements to support your journey



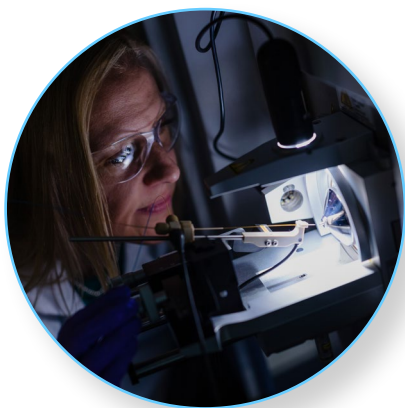
ideate

Learn how to ground your ideas into innovation through an interactive ideation workshop series



inspire

Stoke the spark of inspiration through fireside chats with leaders in the field



immerse

Soak up first-hand experience through shadowing opportunities



Element 1

In collaboration with the Ideation Clinic[™], ECHO Discovery participants will be introduced to key aspects of the ideation process through a series of 120-min interactive workshops.



WORKSHOP THEME

DESCRIPTION

Identifying: People, Purpose & Places

Explore the fundamentals of beginning an innovation project, including the importance of reframing people, purpose and places to achieving success.

Exploring Unmet Needs

Learn strategies to identify and understand your end-user to develop interventions with maximal buy-in and uptake.

Framing Contexts and Requirements

Identify and assess key tools and resources for strategic ideation and to successfully implement innovations.

Generating Testable Ideas

Move through ideation, from brainstorming to design to validation.

Translating Prototypes: Iteration, Validation & Regulation

Discuss how to iterate, connect with stakeholders and navigate regulatory landscapes.

Measuring Impact

Recognize the benefits of assessing innovation and measurement strategies for successful project scaling and implementation.



Element 2

Through a series of intimate fireside chats with successful entrepreneurs and business leaders, ECHO Discovery participants will have the opportunity to:



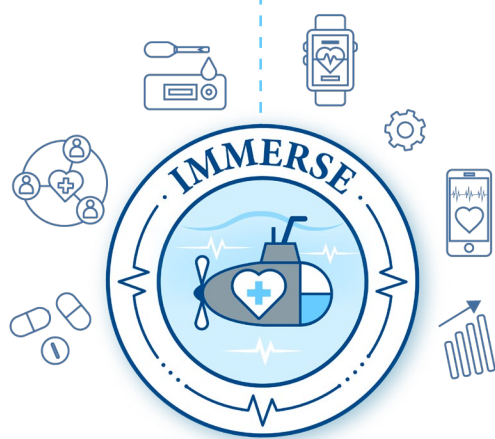
Hear firsthand accounts of becoming an entrepreneur in the cardiovascular health sector and beyond



Pick up hard-won tips, key lessons and smart strategies in navigating the path to innovation and implementation



Ask questions about challenges and opportunities



Element 3

A select group of participants from the ECHO Discovery cohort will have the opportunity to shadow a start-up/ early commercial stage company and gain valuable insight into launching and running a health/life sciences venture. More details will be shared with participants upon their acceptance into ECHO Discovery.

Program overview

ELIGIBILITY CRITERIA

- Fourth-year undergraduate and graduate students enrolled in a Canadian University
- Post-doctoral and clinical fellows affiliated with the Toronto Academic Health Science Network (TAHSN)
- Interested in the idea of cardiovascular entrepreneurship but have limited understanding of what to do next

PROGRAM REQUIREMENTS

- Attend a program orientation session in January 2023
- Participate in each program element for six months, beginning in January 2023
- Attend a minimum of 80% of the program's workshops and fireside chats

PROGRAM TIMING

Call for applications: **October 2022**

Applications deadline: **November 2022**

Notification of acceptance: **December 2022**

Program orientation: **January 2023**

Program elements: **January - June 2023**

**No ideas, start-ups, or
previous experience are
needed to participate!**

CLICK HERE TO APPLY

For more information on the ECHO Discovery program, please contact
Noah Frank: admin.tbep@utoronto.ca

ECHO Discovery is funded and organized by the Translational Biology & Engineering Program and TRANSFORM HF, at the University of Toronto and the Ted Rogers Centre for Heart Research.

